

Pre-Owned BMWs 800-262-9150

info@chicagobmwmotorcycle.com
www.chicagobmwmotorcycle.com

Chicago BMW 

Throttlemeister

A Cruise Control For BMW
and Other Motorcycles

Replaces Original Bar Ends
Also Fits Bikes Without Bar Ends
Easy Installation on Most Bikes

Visit Your Local Dealer or Call

(414) 464-6060 Fax (414) 464-9423

www.throttlemeister.com

Manufactured By:

Marker Machine Inc.

5240 N 124th Street
Milwaukee, WI 53225

DISCOVERY Jacket



- Hilena & Dupont Cordura Outer
- Detachable neck warmer
- Underarms & back ventilation zips
- Knox shoulder, elbow & back armour
- Reflective panels on shoulders, elbows & front pockets
- Duralac fabric reinforcement
- Removable Thermoite liner
- 100% waterproof & breathable

"This beats them all. I'm doing 1200 miles a week, often in awful conditions, yet fail to find the Discovery's limits." - Motorcycle Consumer News

BritishMotorcycleGear.com

1-800-432-9004

Touring Sport

The Carolina's oldest BMW dealer

Service for all BMW models

A complete line of factory parts, accessories and riding apparel



BMW Motorrad USA

1-800-345-4BMW
bmwmotorradusa.com



1431 Laurens Road
Greenville, SC 29607
(864)232-2BMW
touringsportbmw.com

productreviews

Dyna Beads

Balance your tires as you ride...

By Cliff Yankovich #99007

Look all you want, but you will not find any unsightly wheel weights on the Snow Queen, my 2004 Rockster SE. For the last 14,000 miles her wheels have been perfectly in balance thanks to Dyna Beads. These high-density ceramic beads are inside my tires and work their Dynamic Balancing magic without being seen.

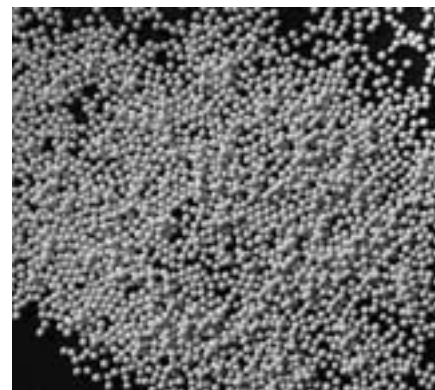
Before we examine how they work, let me give you a little testimony. On my previous set of tires that were installed in early July 2006, the tech at my dealership had to put two ounces of weights on my front tire and there was still a bit of vibration in the bars. He explained that there was a big heavy spot in the tire, (which I purchased elsewhere so it was NOT the dealers problem). When I got home I went to our very own BMW MOA Web forum and did a search on "balancing tires" and found out about Dyna Beads.

I ordered my beads and followed the advice of Robert Krueger from Innovative Balancing. He suggested I remove the weights and put two ounces of Dyna Beads in the front tire. Installation was a breeze - simply remove the valve core (bought the tool from the Dyna Bead people), then install the beads, put the valve core back in; inflate the tires and boogie down the road.

Being somewhat skeptical, I marked the placement of the weights on the tire just in case the beads were a bust. They worked like a champ - NO bar vibration at all. I was really happy to have something that worked just as it promised.

I had my third set of tires installed on April 16 with a little over 22,000 miles on the bike. I brought my beads in with me and asked them to skip the weights and put the beads right inside both tires. They did and the pretty white wheels on my Rockster move down the road as smooth as glass.

A good explanation of how Dyna



Beads work is found on their Web site in the FAQ section near the bottom:

"The physics of how/why the free mass inside the tire automatically knows where to go is hard to conceptualize. The best way to understand why this works is to exaggerate the problem. Imagine there is a 5 lb weight fixed to one place on the tire. When you spin that tire to normal highway speeds, it will be so terribly out of balance that the tire would probably hop off the ground with every rotation. The axis of rotation is actually moved away from the center of the wheel toward this extra mass because it's pulling the whole tire with it as it spins. The free moving balancing weights inside the tire are not affected the same way by these forces. First as you get up to speed, centripetal force will make the balancing weight stick to the inside of the tire. Then the force of the unbalanced weight on the tire will move this balancing weight away from the imbalance. When enough of the mass is opposite of the imbalance, the vibration disappears and the axis that the tire is rotating on returns back to the center." (www.innovativebalancing.com)

The great thing about the Dyna Beads is that they will adjust instantly to any changes in your tire. For instance, if you pick up a stone or the subtle changes that can occur over the life of the tire - the wheels are continually re-balanced every time they spin. The beads will also improve tire wear, eliminate cupping and give more miles of service.

Prices range from (Prices have changed - Ed) including the applicator depending on how many ounces you need. (Yes, they work in tubed tires.) A valve core removal tool is another . It's a pretty minor investment for a high tech development that will give you a glass smooth ride each and every time and spare your bike unsightly wheel weights.